

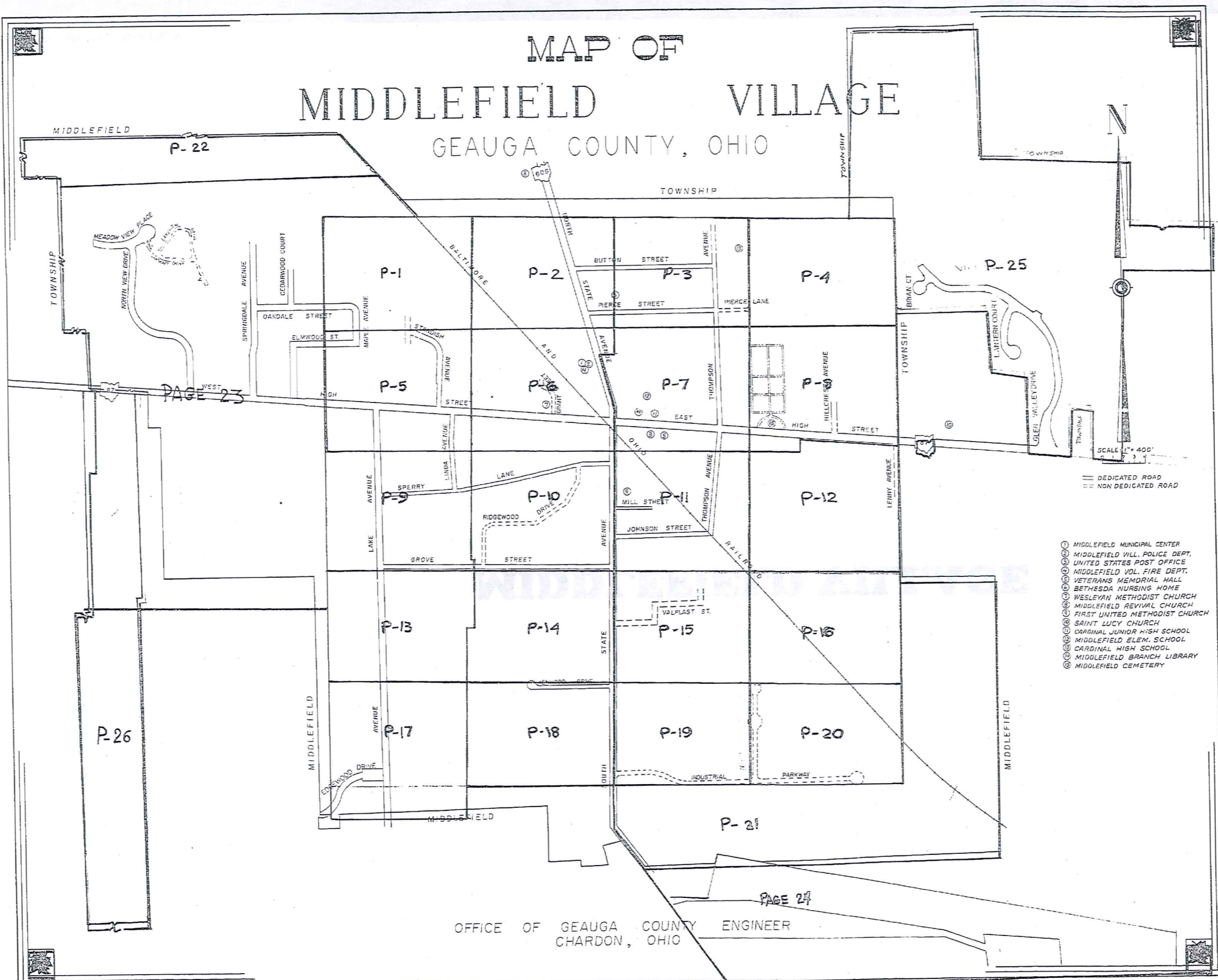


MIDDLEFIELD VILLAGE

305

MAP OF MIDDLEFIELD VILLAGE

GEAUGA COUNTY, OHIO



PAGE 23

PAGE 24

OFFICE OF GEAUGA COUNTY ENGINEER
CHARDON, OHIO

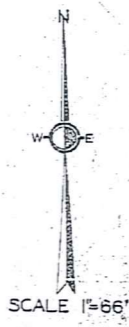
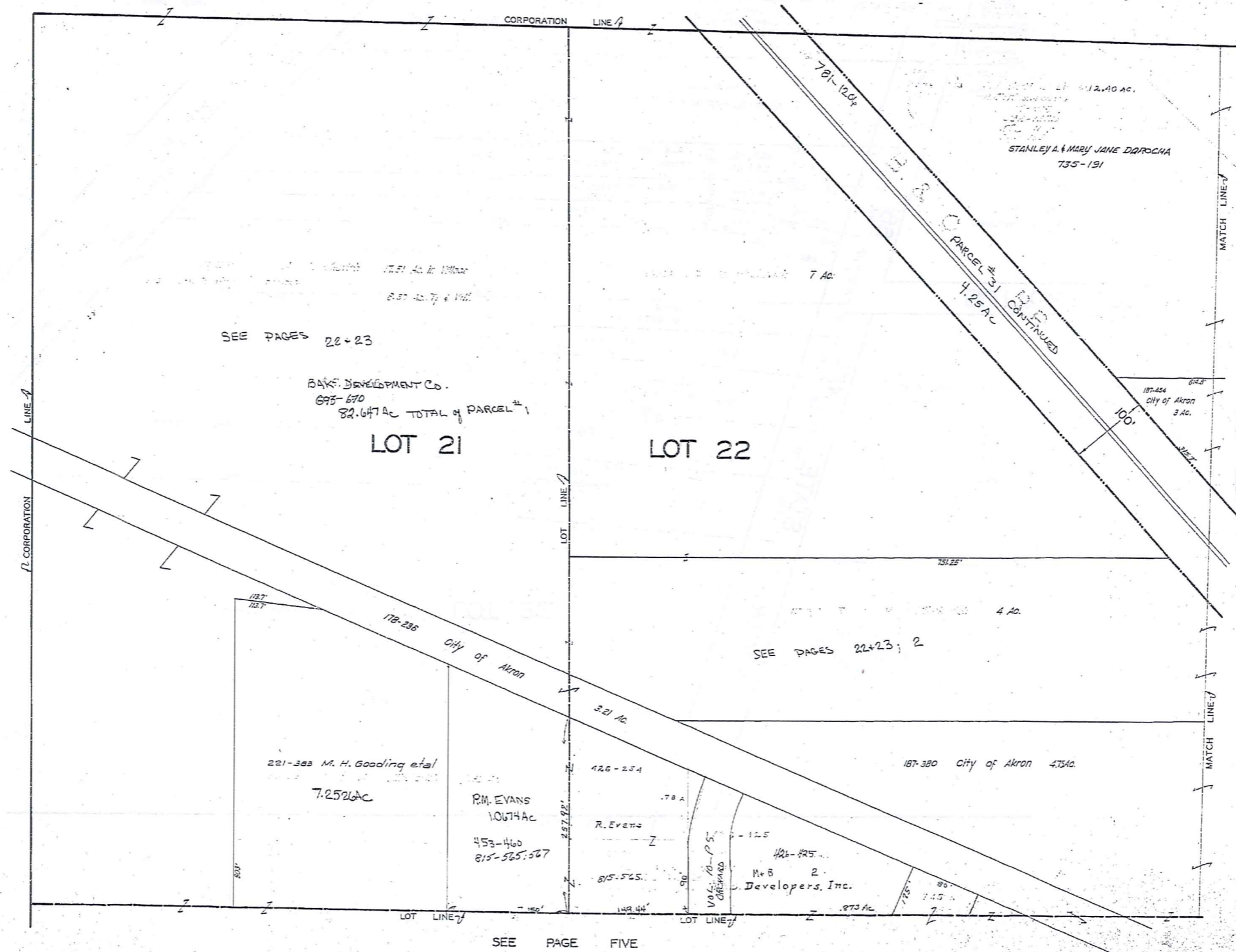
- ① MIDDLEFIELD MUNICIPAL CENTER
- ② MIDDLEFIELD VILL. POLICE DEPT.
- ③ UNITED STATES POST OFFICE
- ④ MIDDLEFIELD VOL. FIRE DEPT.
- ⑤ VETERANS MEMORIAL HALL
- ⑥ BETHESDA NURSING HOME
- ⑦ WESLEYAN METHODIST CHURCH
- ⑧ MIDDLEFIELD REVIVAL CHURCH
- ⑨ FIRST UNITED METHODIST CHURCH
- ⑩ SAINT LUCY CHURCH
- ⑪ CARDINAL JUNIOR HIGH SCHOOL
- ⑫ MIDDLEFIELD ELEM. SCHOOL
- ⑬ CARDINAL HIGH SCHOOL
- ⑭ MIDDLEFIELD BRANCH LIBRARY
- ⑮ MIDDLEFIELD CEMETERY

SCALE 1" = 400'
 1 2 3 4 5 6 7 8 9
 ———— DEDICATED ROAD
 - - - - - NON DEDICATED ROAD

TRW-REDI
 1-800-345-7334
 SCALE IN 1/10 OF AN INCH

MIDDLEFIELD VILLAGE

PAGE 1



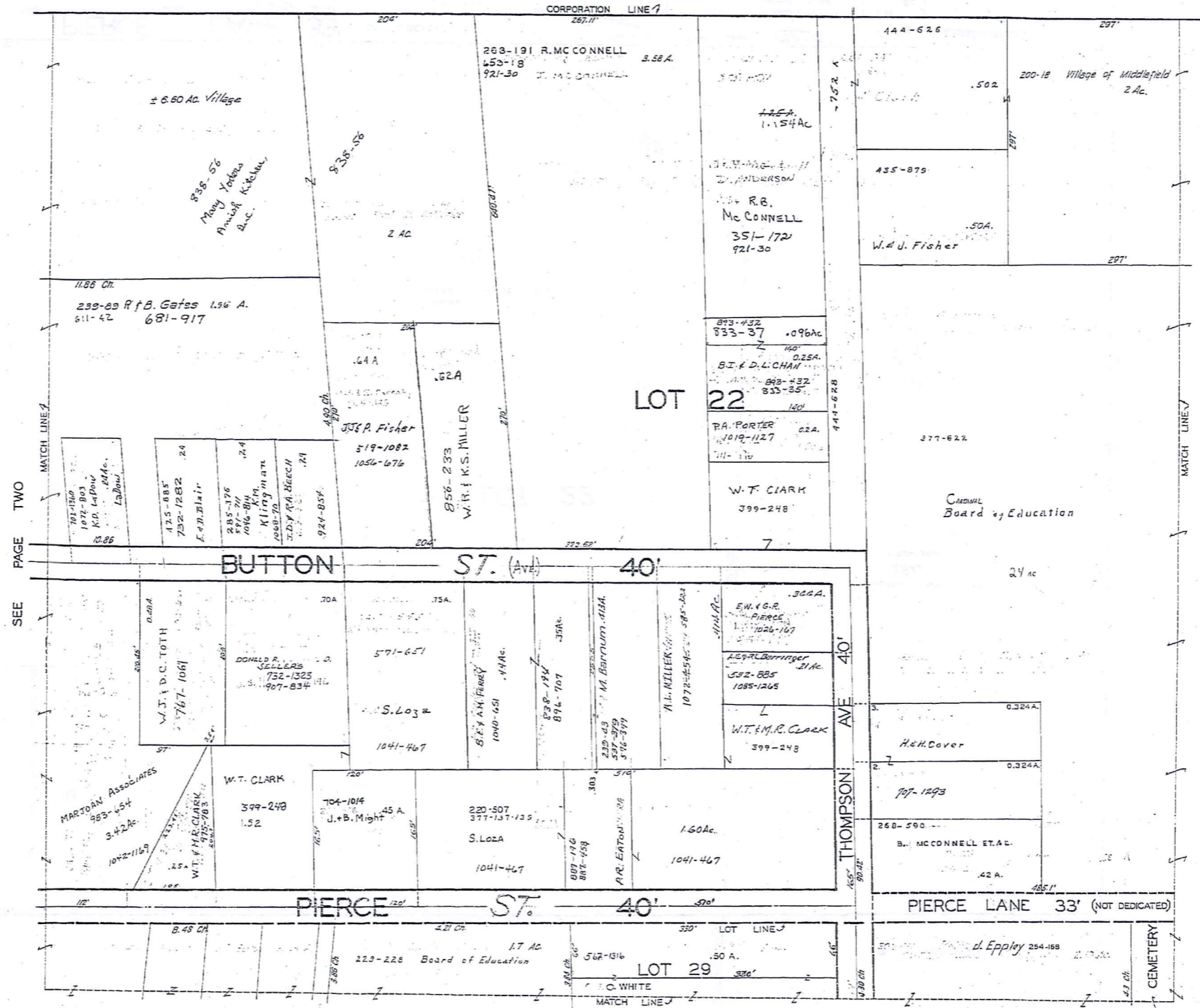
TRW/REDI
 1-800-345-7334
 SCALE IN 1/10 OF AN INCH

307

SEE PAGE FIVE

RELATIVE REPRESENTATION
 MIDDLEFIELD VILLAGE
 PG. 1

MIDDLEFIELD VILLAGE



TRIM HEAD
 1-800-345-7334
 SCALE IN 1/16" OF FINISH



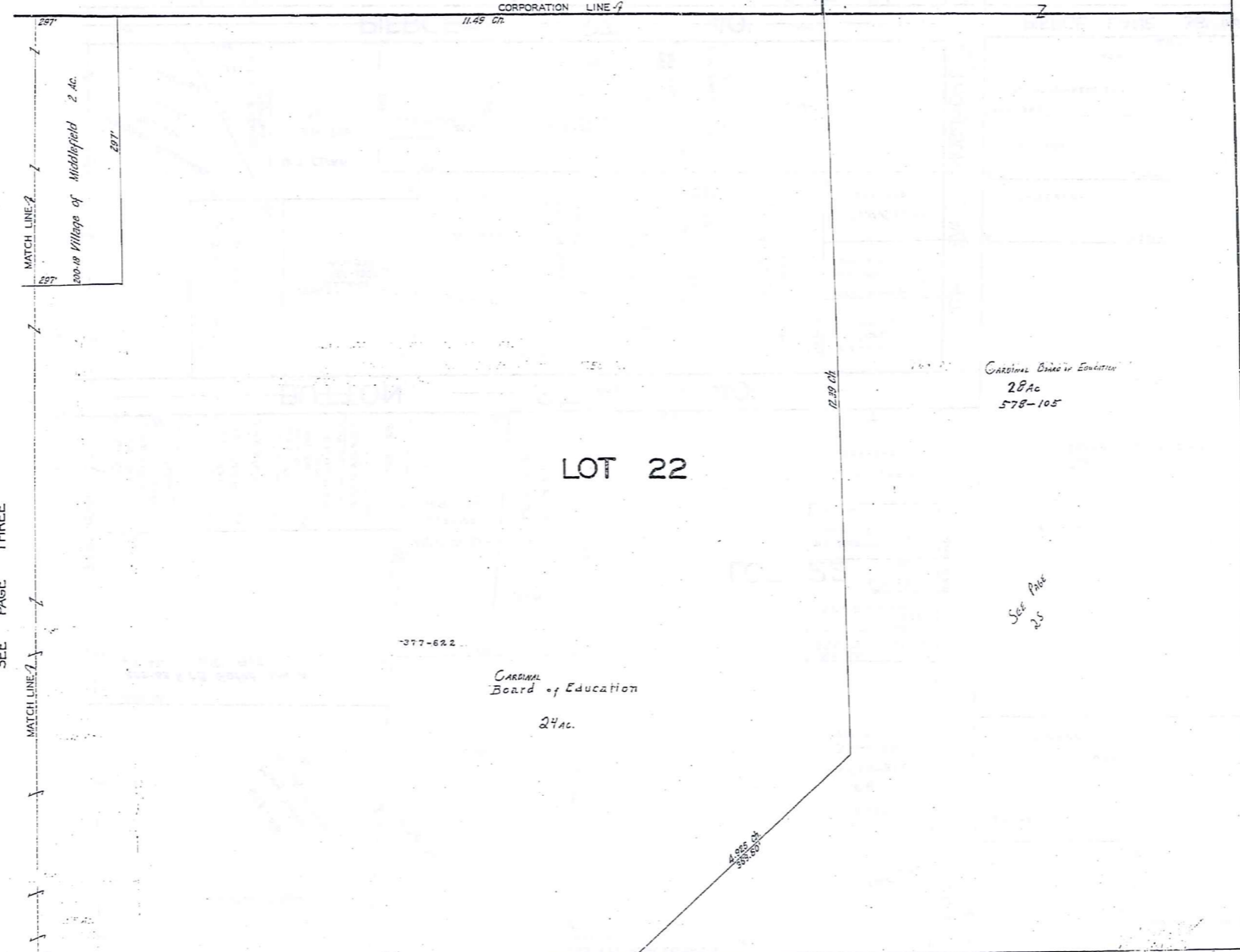
309

SEE PAGE SEVEN

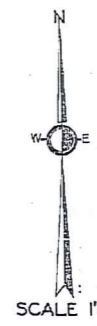
SEE PAGE FOUR

MIDDLEFIELD VILLAGE

SCALE PAGE 25



SEE PAGE THREE



1-800-345-7334
TRU-REDI
SCALE IN 1/16" OF AN INCH

310

110.86'	145.55'	210.45'	331-542	298.55'	109.50'	71.85'	18.0126
VILLAGE OF MIDDLEFIELD CEMETERY 1038-305	VILLAGE OF Middlefield 1038-305 1.67 AC	Middlefield 513-187	M. Hills 6 AC	THOMAS H. PAGE, JR. 823-127 260-27	LAURA SANYER 208-42 3.33A	2A 754-1142	JULIAN DABROS 3.37 AC
2.11 AC	PARCEL #7	PARCEL #6					

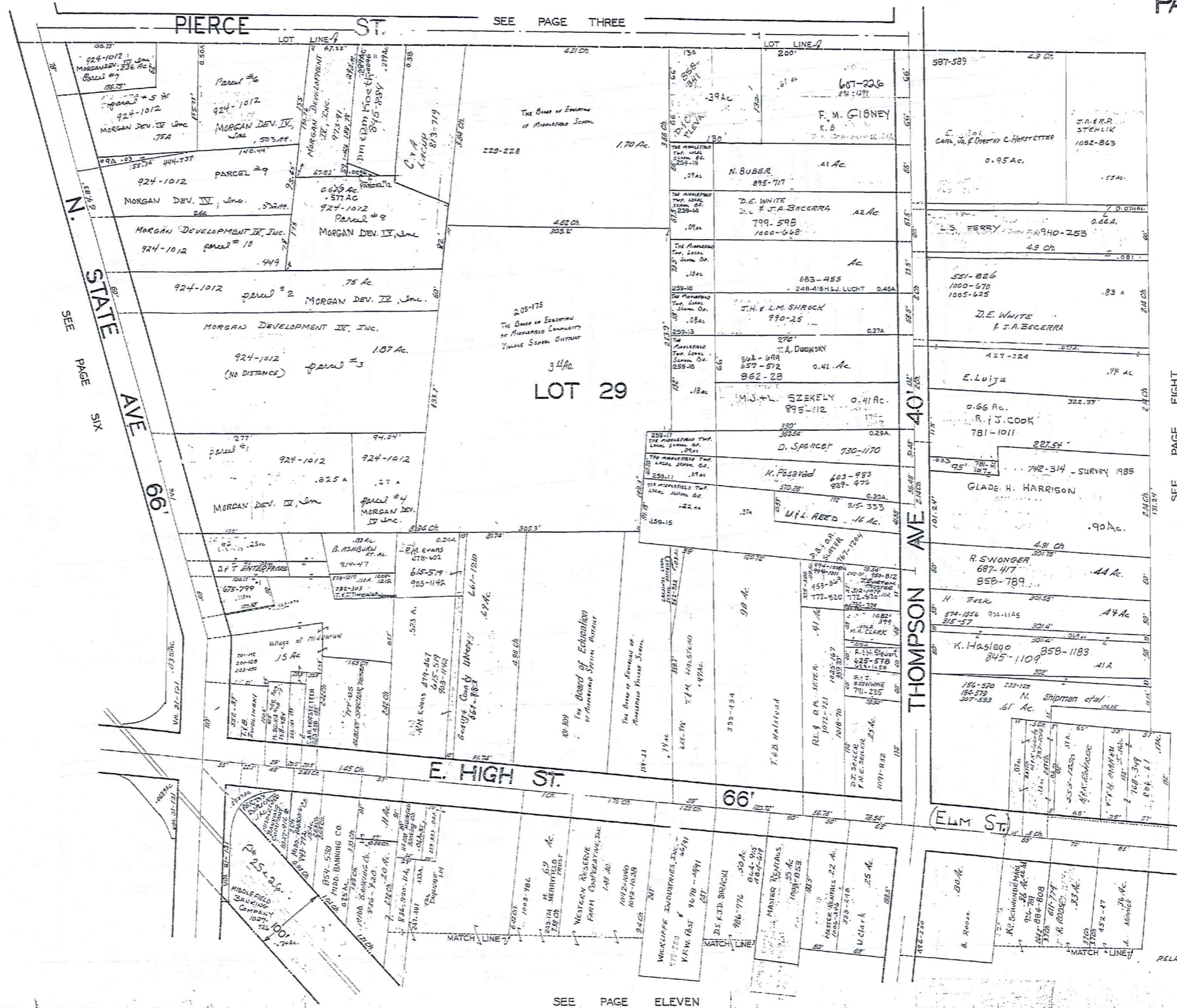
LOT 29

SEE PAGE EIGHT

JANUARY 1, 1997

RELATIVE REPRESENTATION
MIDDLEFIELD VILLAGE
PG. 4

MIDDLEFIELD VILLAGE



SEE PAGE SIX

SEE PAGE THREE

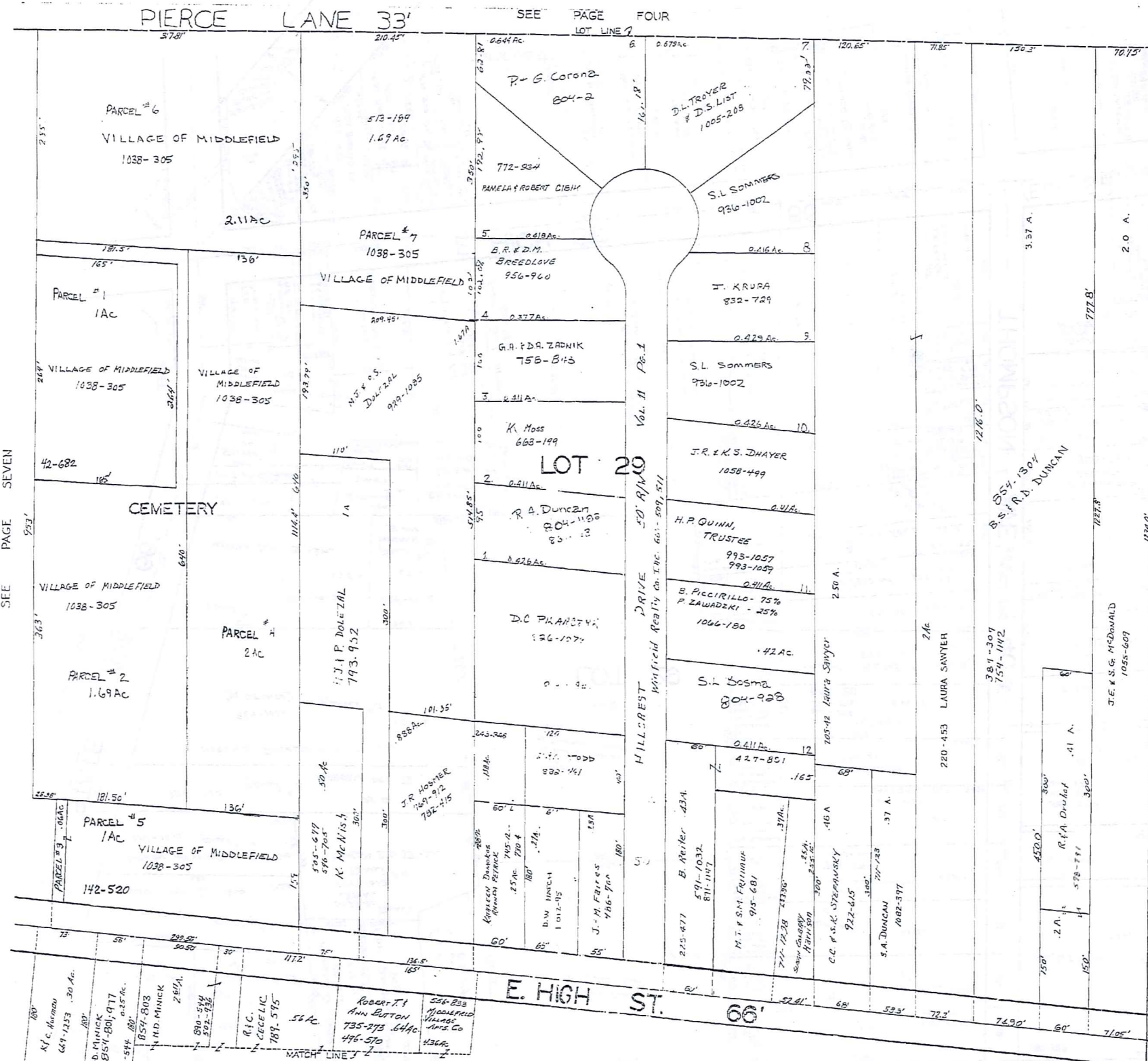
SEE PAGE EIGHT

SEE PAGE ELEVEN

TRW-REDI
1-800-345-7334
SCALE IN FEET OF AN INCH

313

JANUARY 1, 1992
RELATIVE REPRESENTATION
MIDDLEFIELD VILLAGE
PC. 7



SEE PAGE SEVEN

SEE PAGE TWELVE



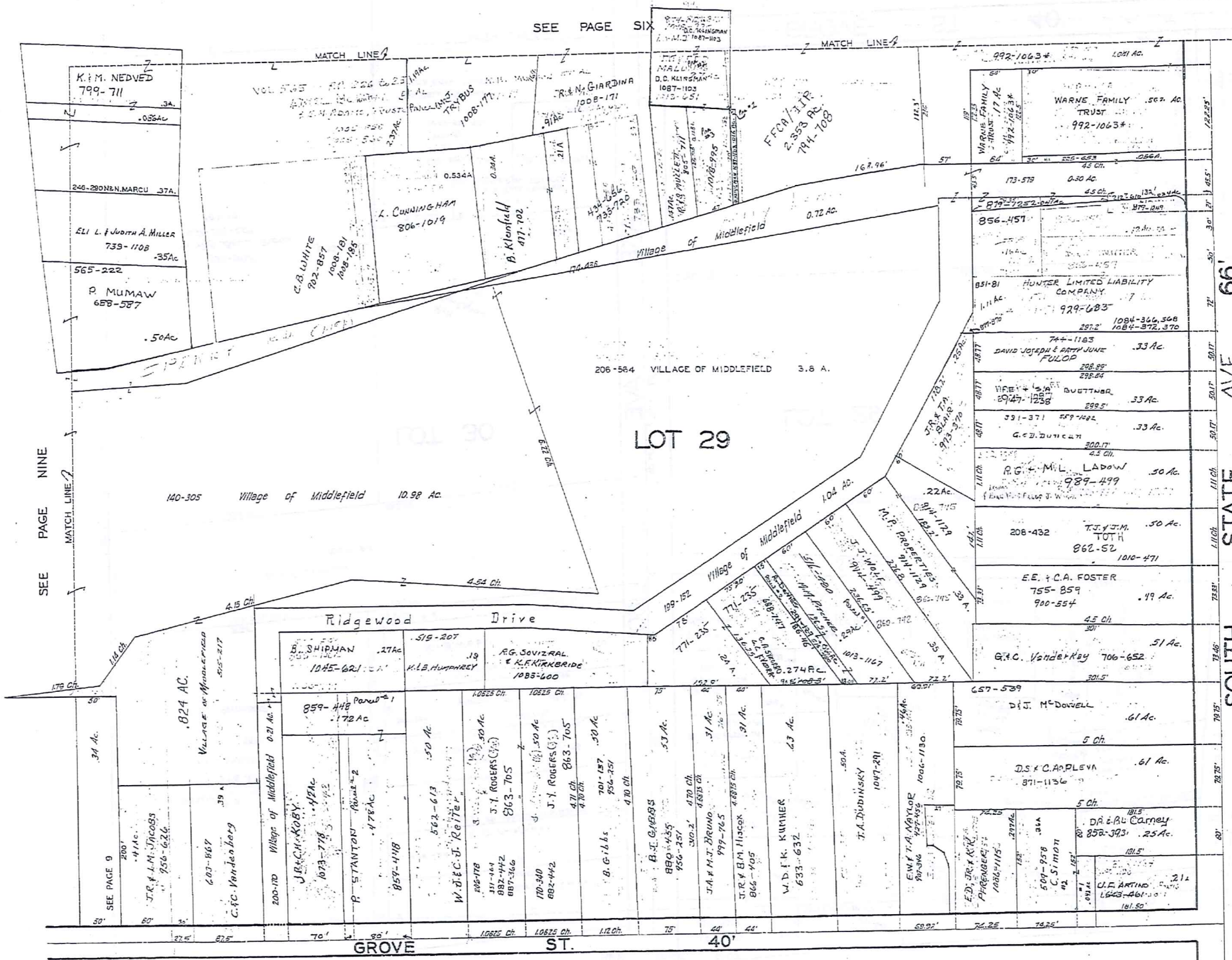
SCALE 1"=66'

JAN. 1, 1997



314

RELATIVE REPRESENTATION
MIDDLEFIELD VILLAGE
PG. 8



SEE PAGE NINE

SEE PAGE SIX

SEE PAGE FOURTEEN

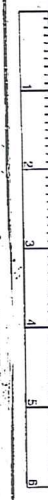
SOUTH STATE AVE 66' MAIN ST ELEVEN



SCALE 1"=66'

JAN. 1, 1997

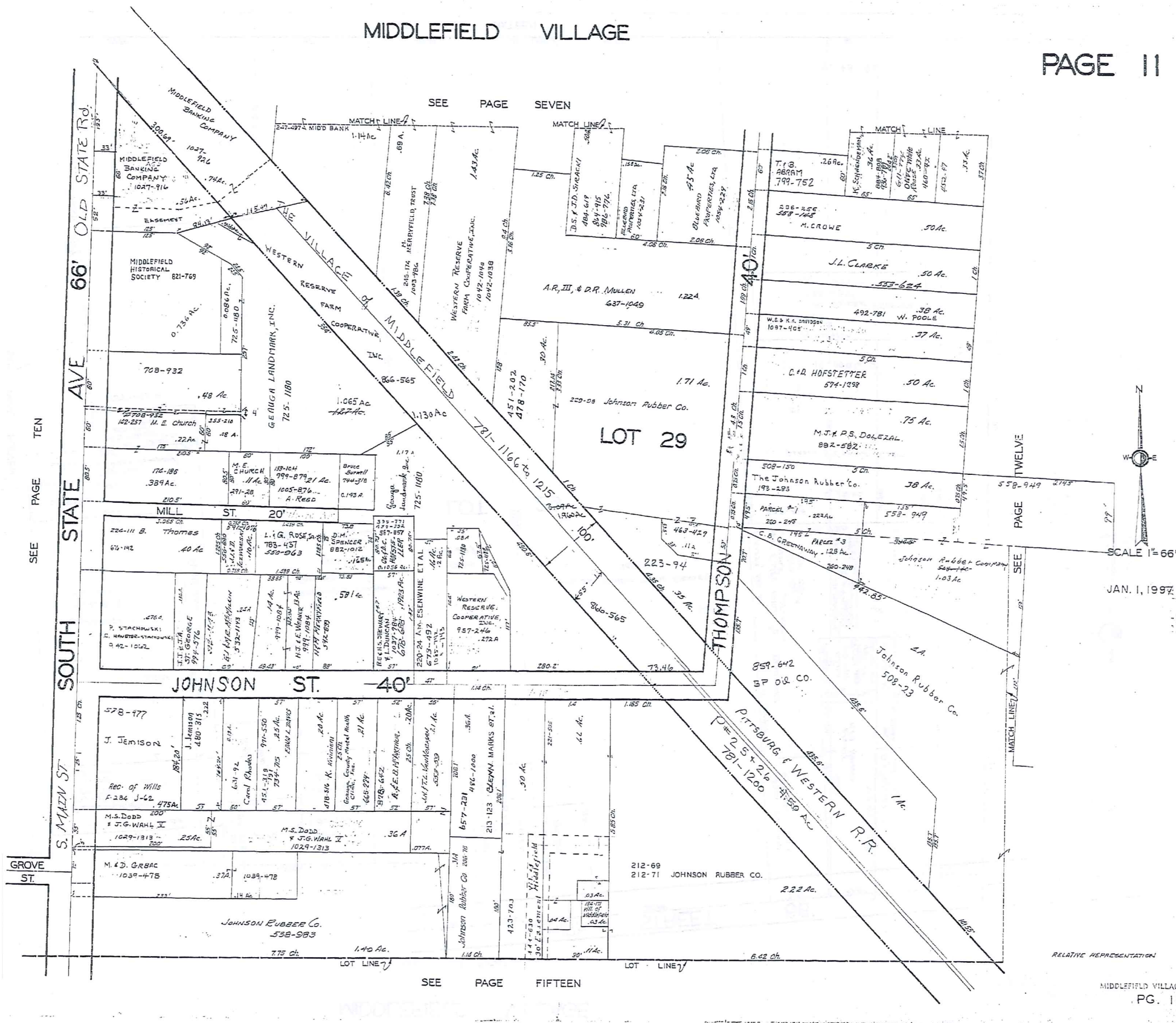
TRW-REDI
1-800-343-7334



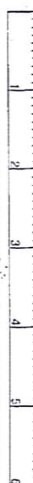
SCALE IN 1/16" OF AN INCH

316

MIDDLEFIELD VILLAGE



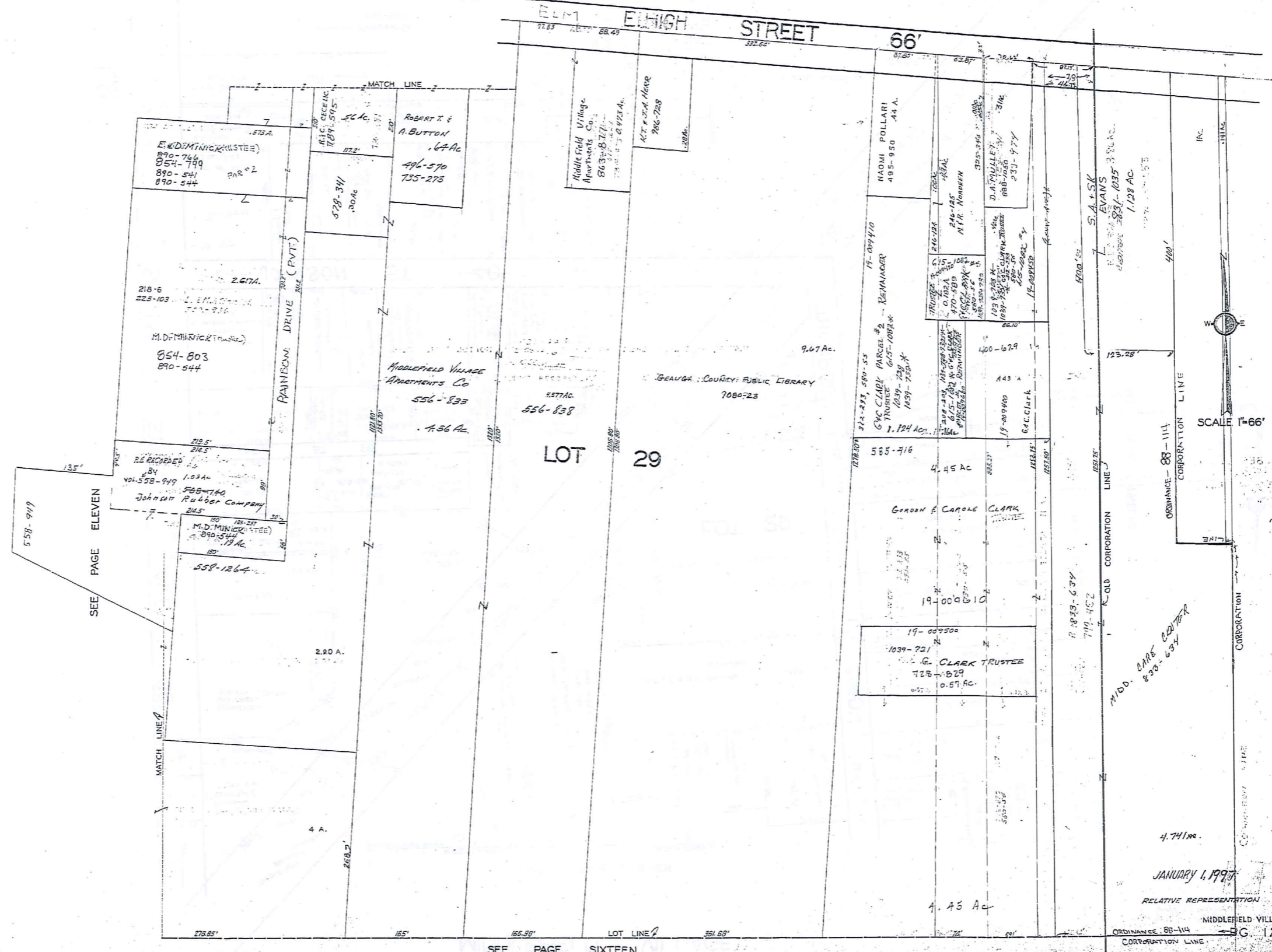
TRIM, REED
1-800-345-7334



317

SEE PAGE EIGHT

ELM HIGH STREET 66'



TRIM-REDI
1-800-345-7334

SCALE IN 1/16" OF AN INCH

318

SEE PAGE SIXTEEN

4.741 ac.

JANUARY 1, 1997

RELATIVE REPRESENTATION

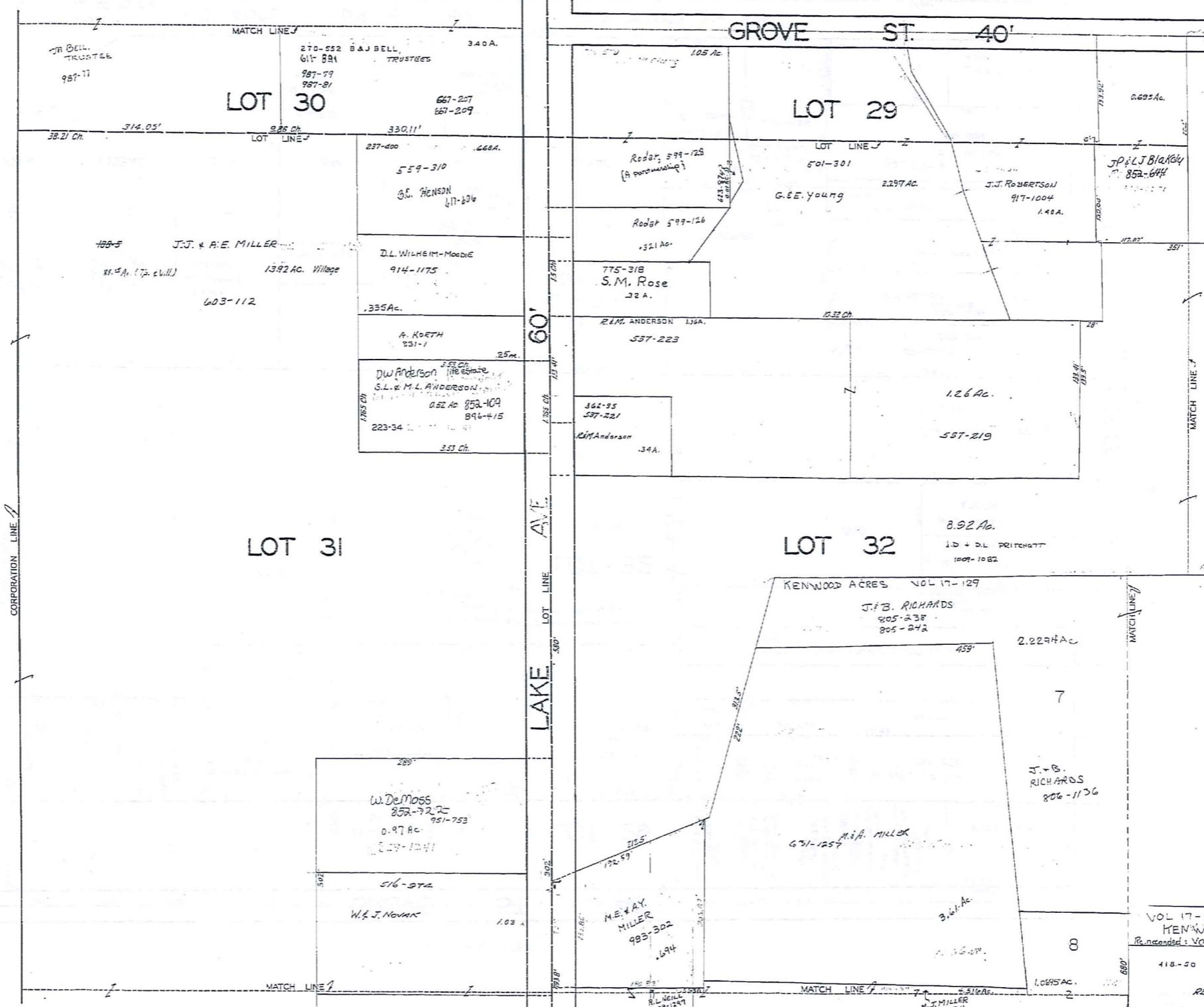
MIDDLEFIELD VILLAGE

ORDINANCE 88-114

CORPORATION LINE

MIDDLEFIELD VILLAGE

SEE PAGE NINE



SCALE 1"=66'

JAN. 1, 1957

TRW-REDI
1-800-345-7334

SCALE IN 1/16" OF AN INCH

319

SEE PAGE SEVENTEEN

SEE PAGE FOURTEEN

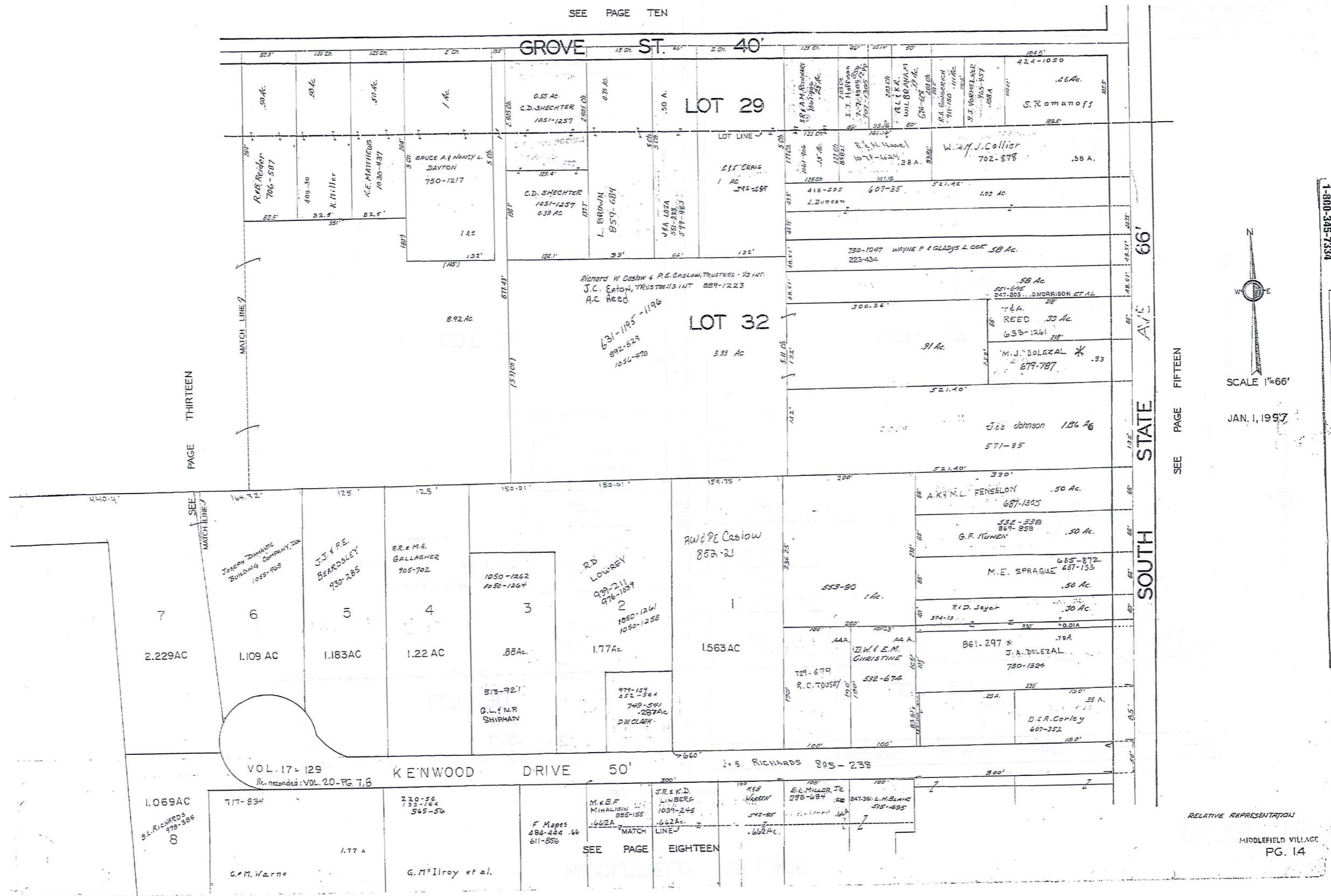
VOL 17-129-130
KENWOOD ACRES S4.8.
Recorded: VOL. 20-PG. 7, P.

418-20

RELATIVE REPRESENTATION

MIDDLEFIELD VILLAGE
PG. 13
G. & M. Warner
177 A

SEE PAGE TEN



PAGE THIRTEEN

SEE PAGE FIFTEEN



SCALE 1"=66'
JAN. 1, 1997

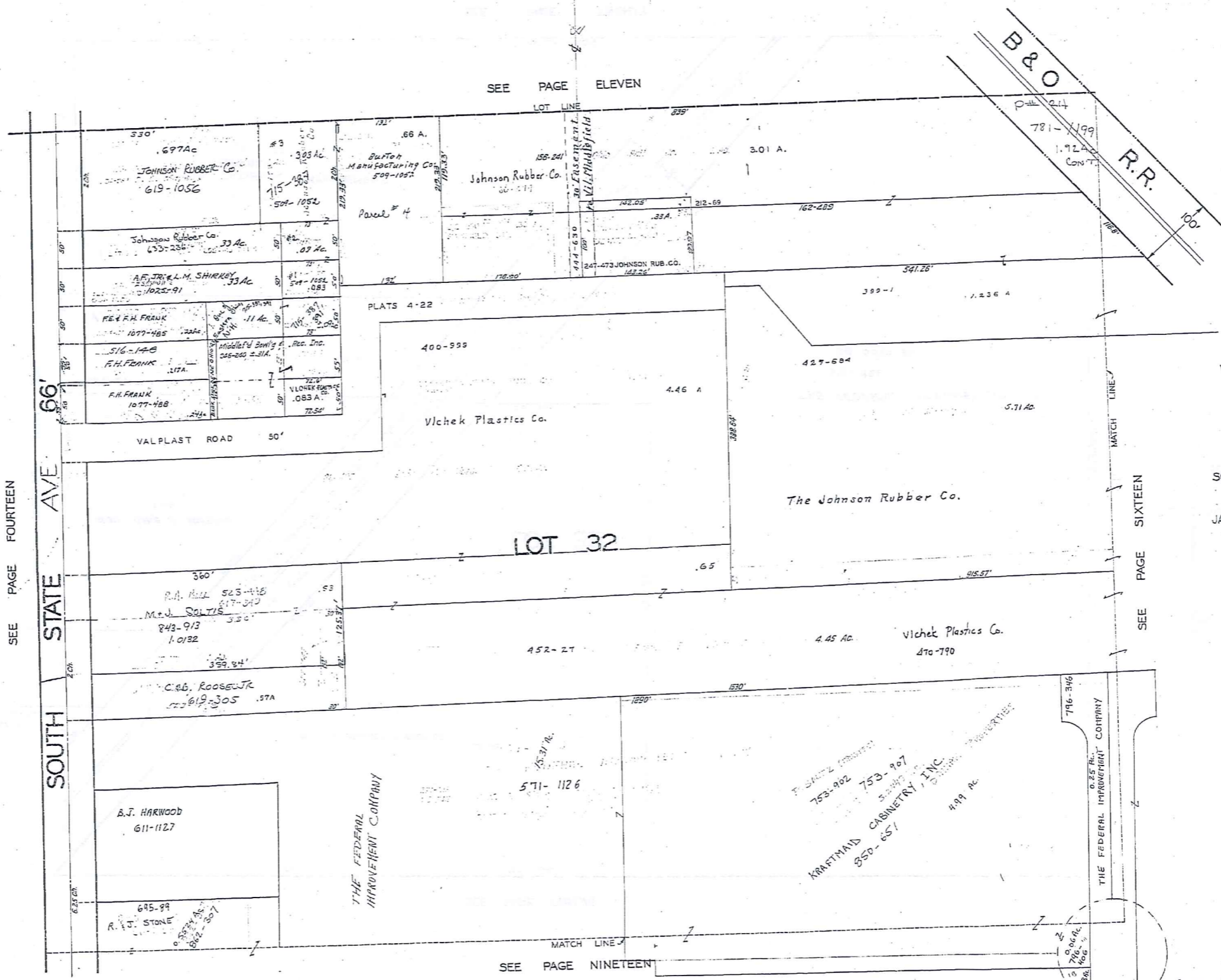
1-800-345-7334
TRM-REDI
SCALE IN 1/10 OF AN INCH

320

RELATIVE REPRESENTATION
MIDDLEFIELD VILLAGE
PG. 14

SEE PAGE EIGHTEEN

MIDDLEFIELD VILLAGE



SCALE 1"=66'
 JAN. 1, 1997

TRM-REDI
 1-800-345-7334
 SCALE IN 1/10 OF AN INCH

321

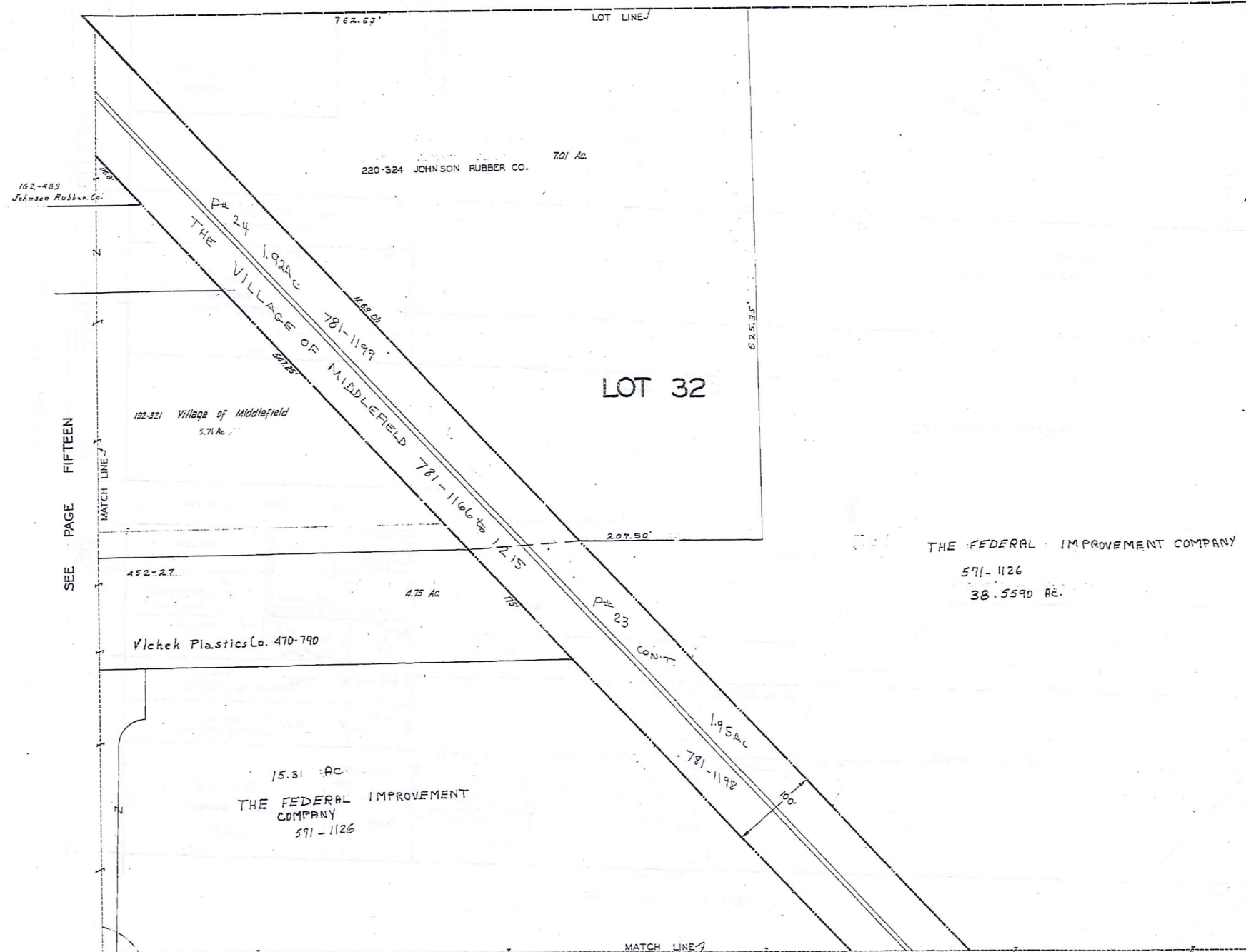
SEE PAGE NINETEEN

SEE PAGE FOURTEEN

SEE PAGE SIXTEEN

RELATIVE REPRESENTATION

SEE PAGE TWELVE



SEE PAGE FIFTEEN

SEE PAGE 21

SEE PAGE TWENTY



SCALE 1"=66'

JAN. 1, 1997

TRIM-BED
1-800-345-7334

SCALE IN 1/10 OF AN INCH

322

RELATIVE REPRESENTATION

MIDDLEFIELD VILLAGE
PG. 16

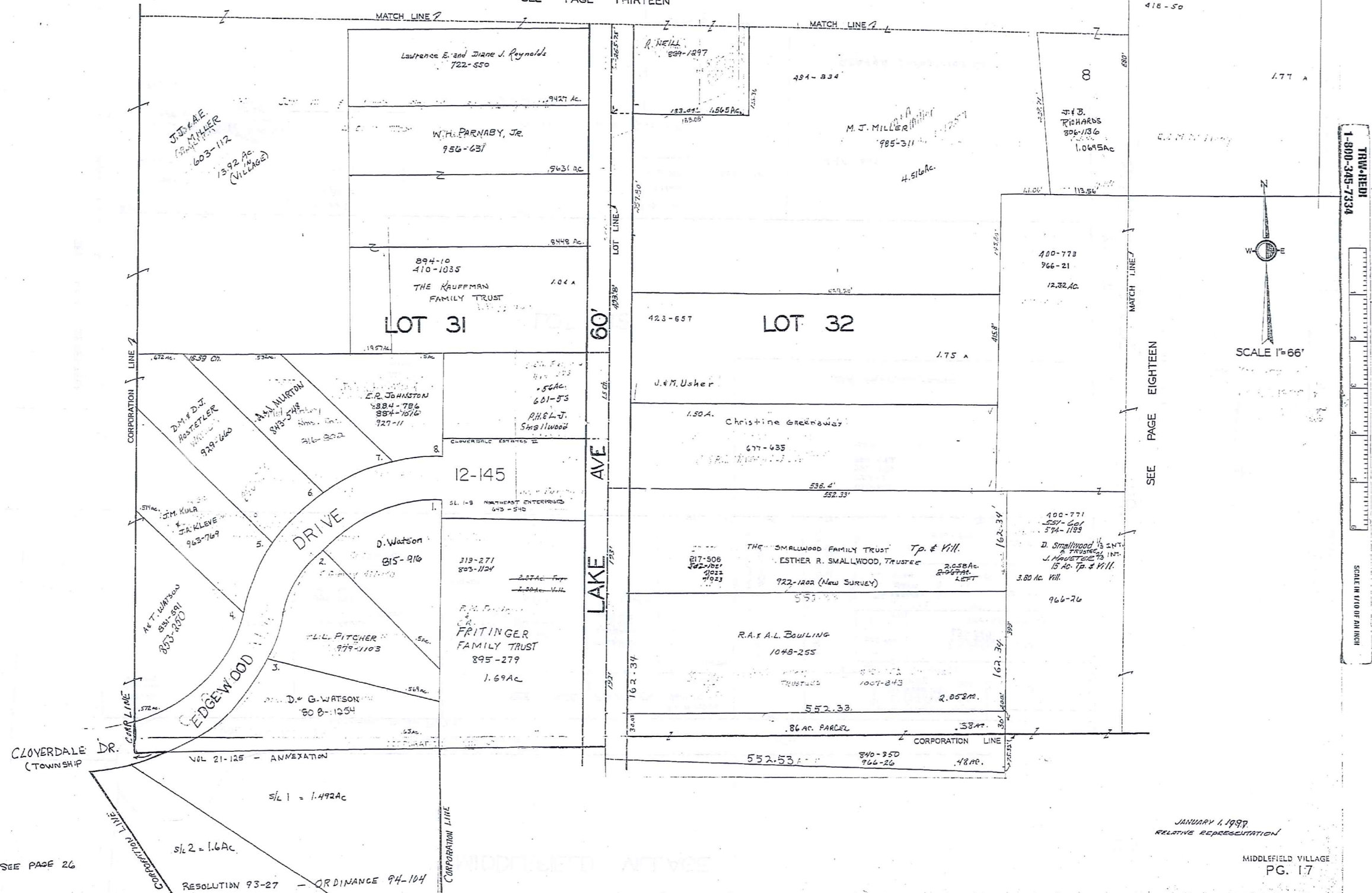
MIDDLEFIELD VILLAGE

MIDDLEFIELD VILLAGE

PAGE 17

VOL 17-129
KENWOOD ACRES SUB.
Reference: Vol. 20, Pg. 7, 8

SEE PAGE THIRTEEN



323

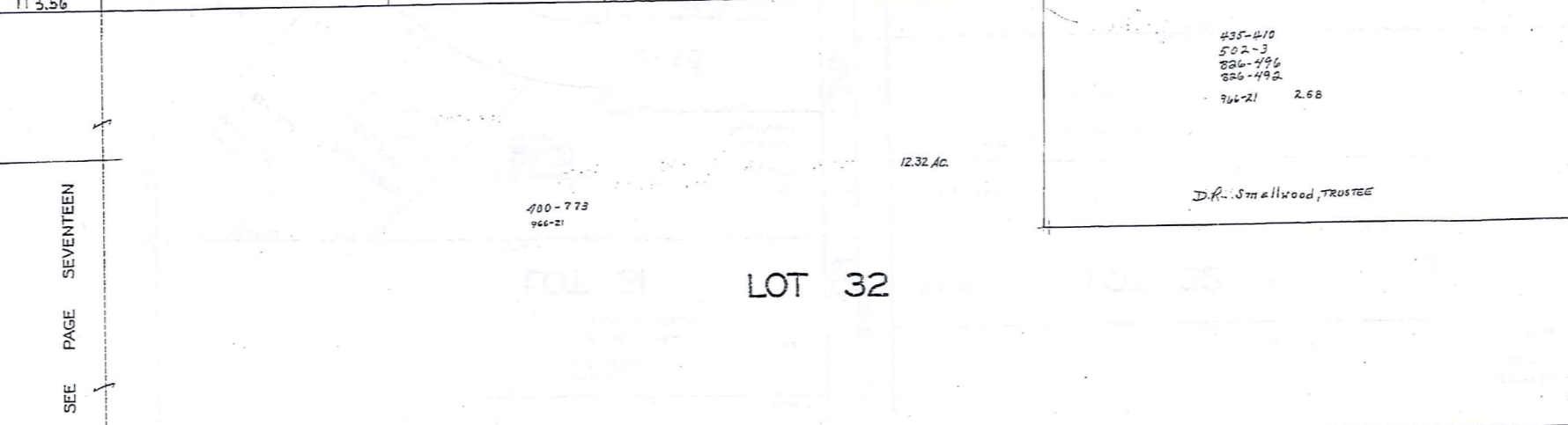
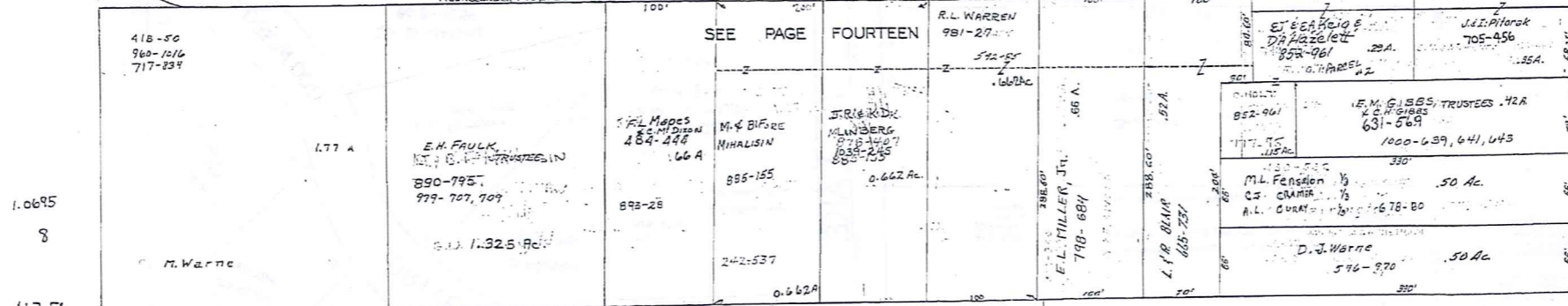
SEE PAGE 26

RESOLUTION 93-27 - ORDINANCE 94-104

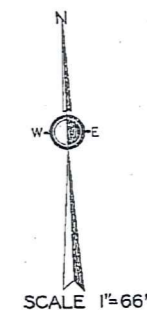
JANUARY 1, 1997
RELATIVE REPRESENTATION

MIDDLEFIELD VILLAGE
PG. 17

VOL 17 - P. 129
KENWOOD DRIVE 50' 50'



MAIN ST
SOUTH STATE AVE 66'



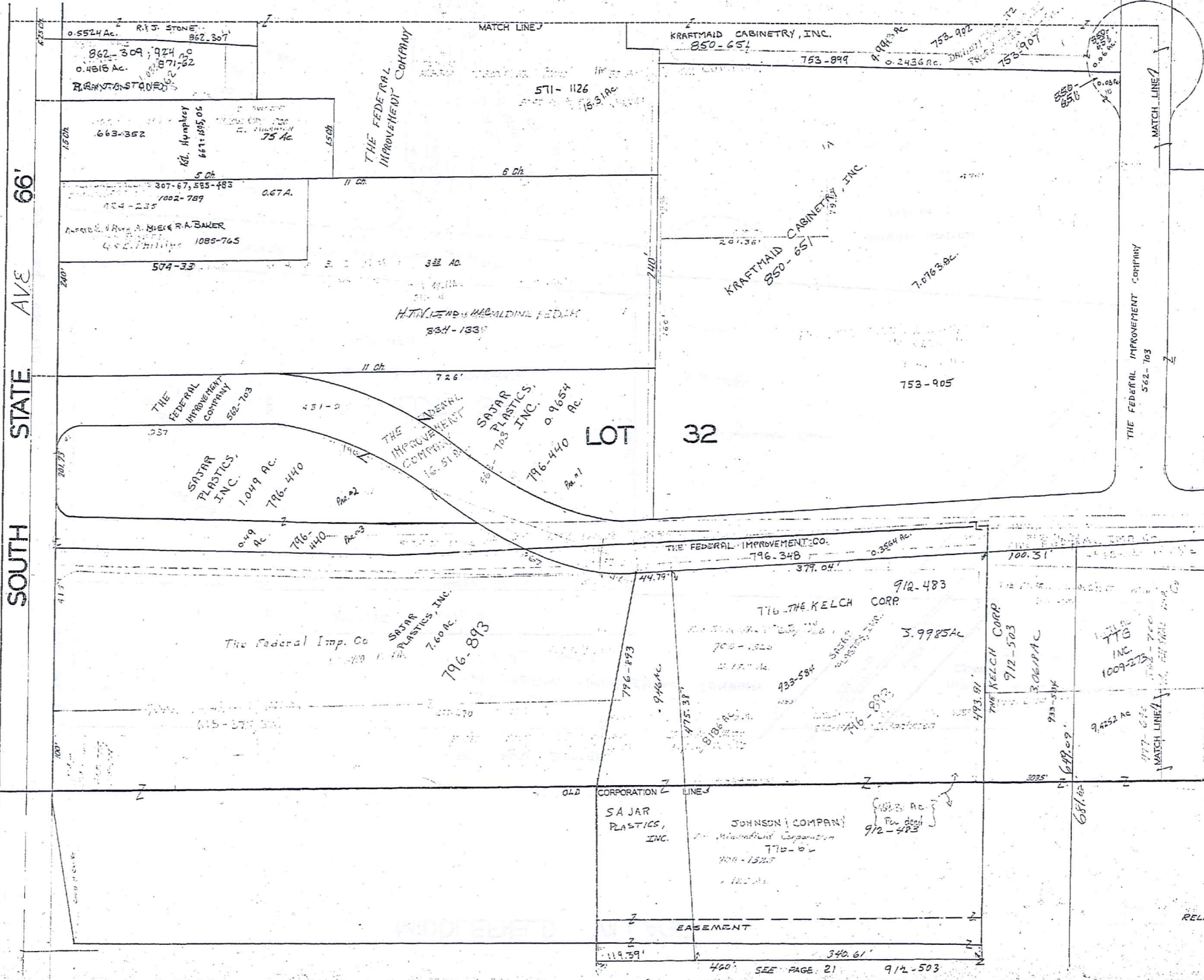
TRU-NED
1-800-345-7334

SCALE IN 1/10 OF AN INCH

324

MIDDLEFIELD VILLAGE

SEE PAGE FIFTEEN



SEE PAGE EIGHTEEN

SOUTH STATE AVE 66'

SEE PAGE TWENTY

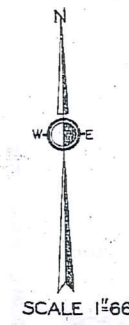
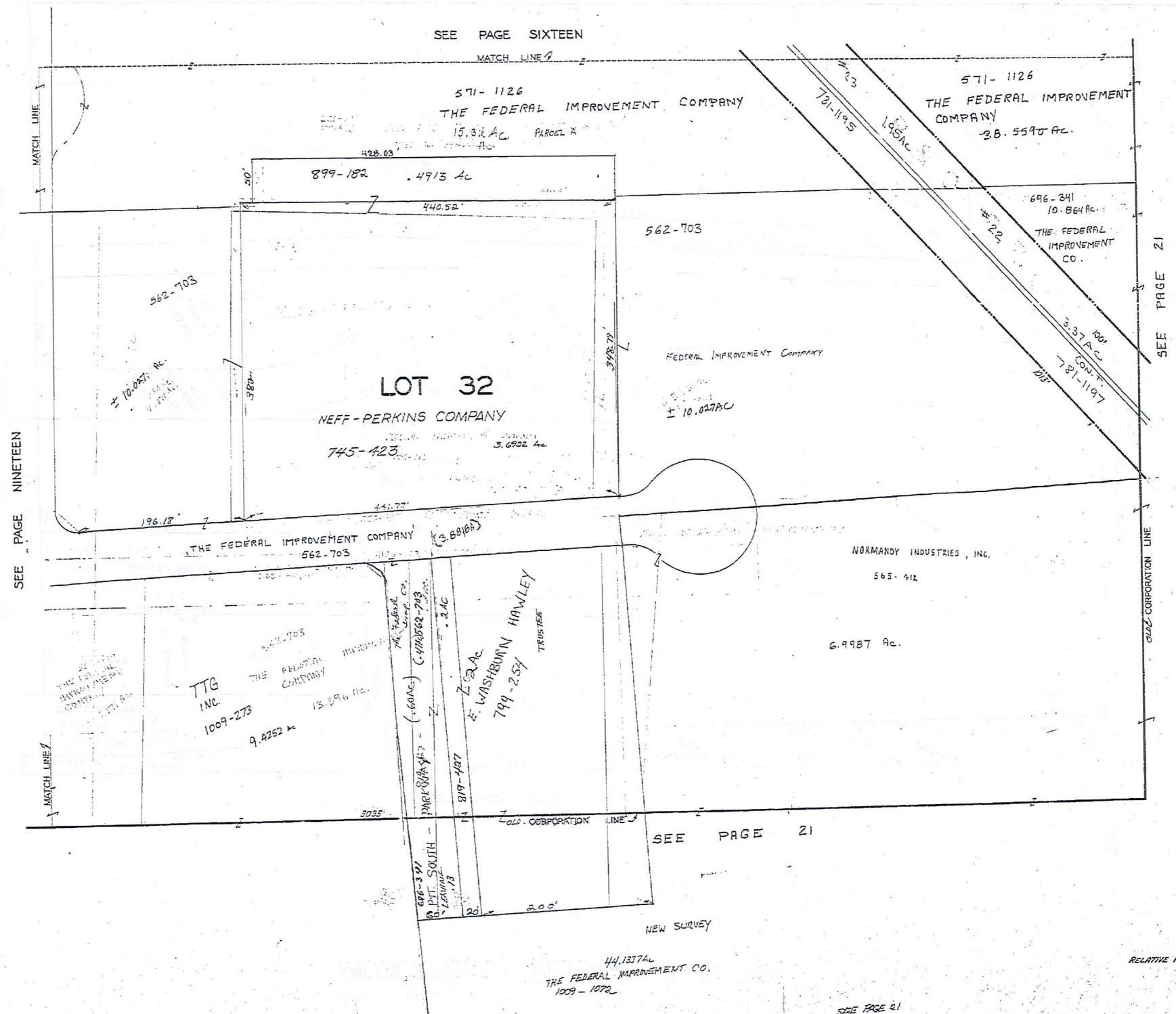


JAN. 1, 1997

TRM-REDI
1-800-345-7334

SCALE IN 1/10 OF AN INCH

325



JAN 11 1997

TRW-REDI
1-800-345-7334

SCALE IN 1/10 OF AN INCH

326

RELATIVE REPRESENTATION
MIDDLEFIELD VILLAGE
PG. 20

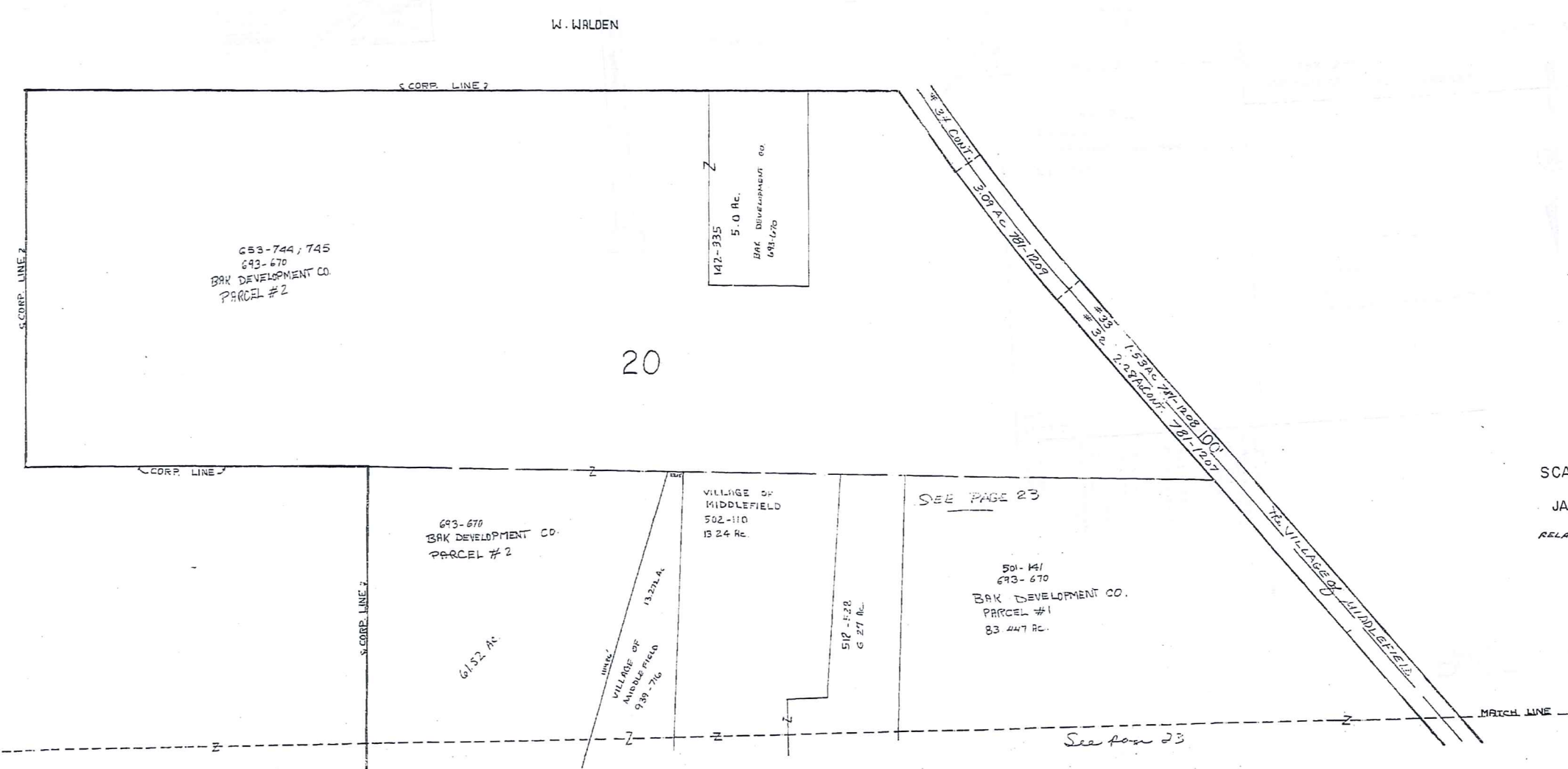
SEE PAGE 21

SEE PAGE 21

SEE PAGE SIXTEEN

SEE PAGE NINETEEN

ATTACHE
INDICATED



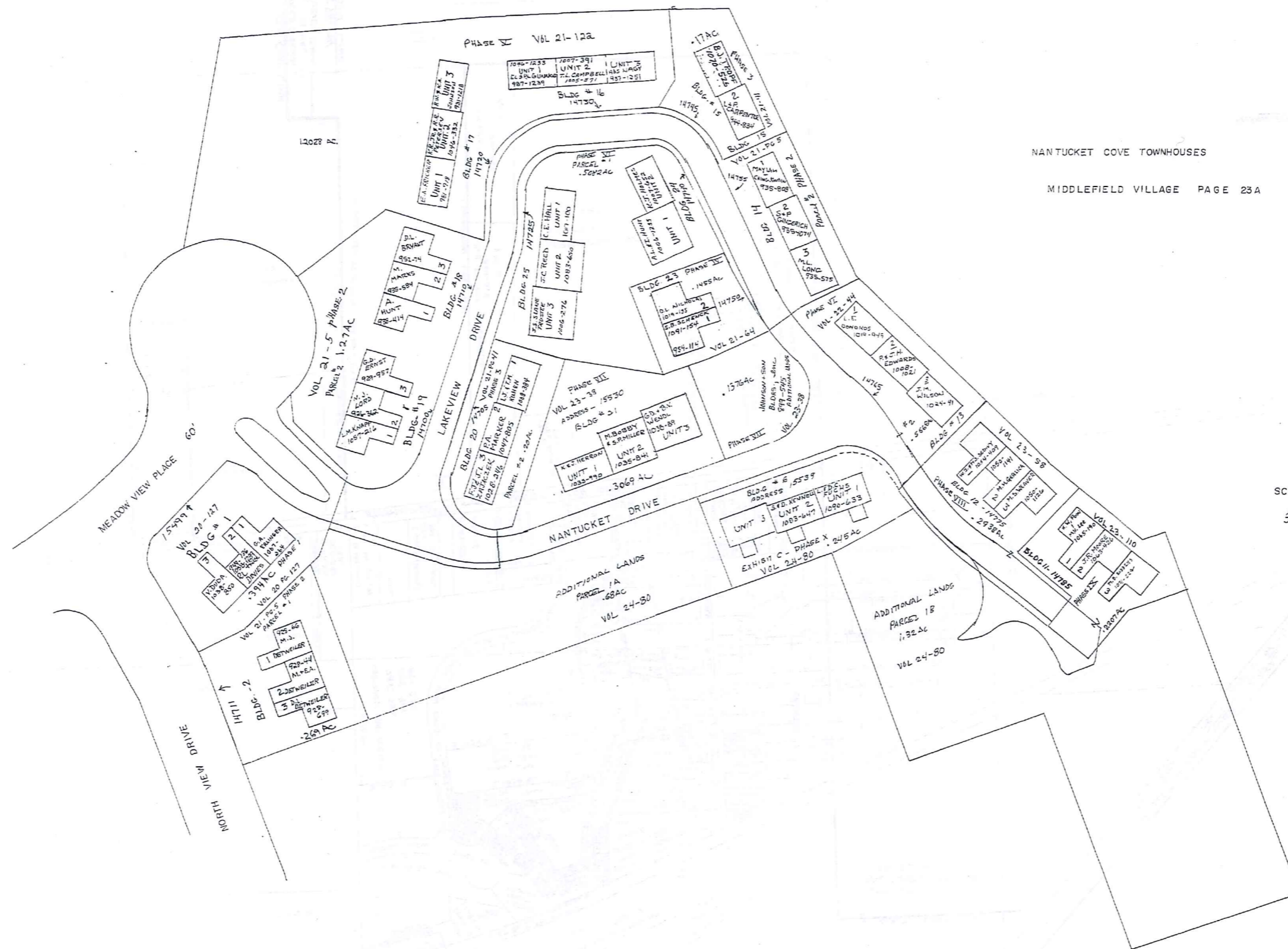
TRW-REDI
1-800-345-7334

SCALE IN 1/10 OF AN INCH

328

SCALE 1"=200'
 JAN. 1, 1997
 RELATIVE REPRESENTATION
 N.W.
 MIDDLEFIELD VILLAGE
 PG. 22

See page 23



NANTUCKET COVE TOWNHOUSES

MIDDLEFIELD VILLAGE PAGE 23A

SCALE - 1" = 40'
 JAN. 1, 1997

TWM-REDI
 1-800-345-7334
 SCALE 1/10 OF AN INCH

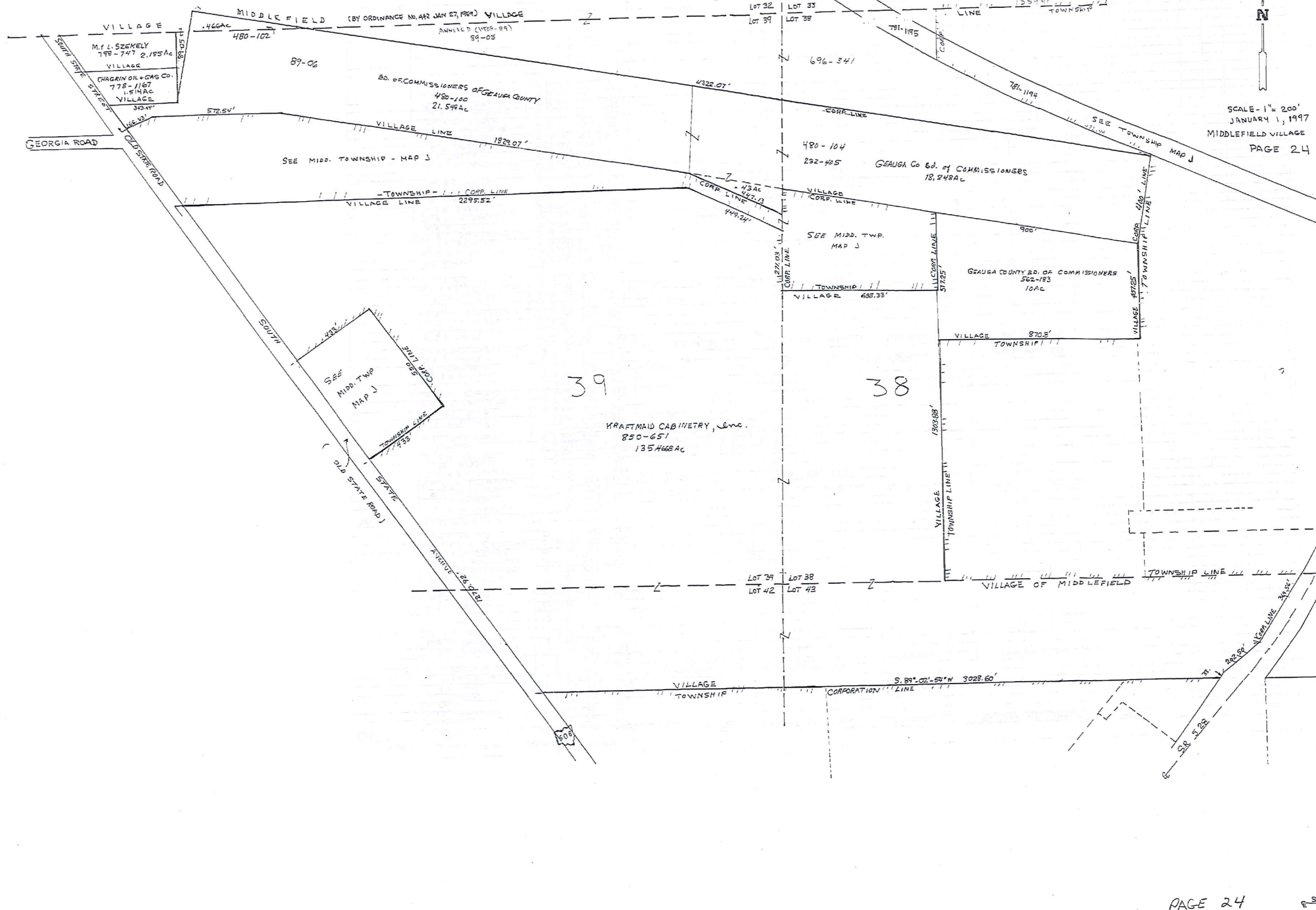
330

MIDD. VILLAGE				THE MARX RUTH B. GOODING SURVEY				VOL 6 - Page 71							
DATE	OWNER	S/L	AC VOL PAGE	TRANSFERRED TO	S/L	DATE	VOL PAGE	TRANSFERRED TO	S/L	DATE	VOL PAGE	TRANSFERRED TO	S/L	DATE	VOL PAGE
	N. NELSON	1	0.276 562 720												
	R. D. RAUNGARTNER	2	0.276 301 687												
	E. FALES	3	0.276 387 486												
	S.L. THOMAS	4	0.276 480 812												
	T. R. MOSS	5	0.276 553 1272												
	L. McELROY AKA L. BERKUS	6	0.276 710 586	P.E. GILKESBLESS	6	7/25/84	982 861								
	R.E. CHRISTOFFERSON	7	0.276 873 912	E. CHRISTOFFERSON	7	7/25/84	982 1222	E. CHRISTOFFERSON	7	7/25/84	986 842				
	J. M. BORKHOLDER	8	0.276 495 418												
	R. J. HERRON	10	0.276 785 9												
	R. J. TRODE	11	0.276 734 289												
	M.E.D. MIHALISIN	14	0.276 798 1												
	L. K. JONES	15	0.276 690 201												
	D. S. CLARKE	16	0.276 576 1351	S. CLARKE	17	7/27/84	983 136								
	T.A. D.H. POLAKOWSKI	17	0.276 279 1107												
	W. T. HOSTETLER	18	0.276 883 1012												
	J.W. R.B. STEELE	20	0.276 765 891												
	R. L. E.A. CSOKMAY	21	0.276 874 969												
	R. S. L. KASER	22	0.276 574 33												
VOL 9 - 13															
	D. M. PARTON	1	0.247 705 121												
	K. QUILLEN	2	0.247 550 892	J. STINNES	3	6/19	982	M.E. - V. BOYLES	2	3/26/84	1010 590				
	P. L. WISEMAN	3	0.247 795 31												
	R. L. T.K. DEWELLER	4	0.247 928 1318	C. L. E. GAUSE	4	7/27/84	982 597								
	G.W. & B.N. WILKES	5	0.247 527 639												
	N. LANGHAM	6	0.247 915 933												
	A. & M. SATTERLEE	7	0.247 815 442	also Northwly S1/4 of S1/2 S. 21S-442											
	G. EULOP	8	0.247 780 737	also Northwly S1/4 of S1/2 S. 21S-442											
	A. & D. BARCOWSKI	9	0.247 337 924	also Northwly S1/4 of S1/2 S. 21S-442											
	E. STEWART	11	0.247 936 270	also Southwly S1/4 of S1/2 S. 21S-442											
	E. & E. SELBY	12	0.247 484 600												
	M. & E. BRILLA III	13	0.247 912 14												
	W. & B. OSBOND	14	0.247 576 1033												
	A. B. & R. M. HILL	15	0.247 876 1032												
	R. DEMARCO	16	0.247 902 966												
	D. & C. HERSH	17	0.247 813 1006	P. & R. S. GAUSE	17	10/24/84	782	R. S. & C. M. DEMARCO	17	12/22/84	1086 521				
	R. J. & A. M. Z. DEWELLER	18	0.247 819 243												
	E. & C. ZIEGLER	19	0.247 878 90	R. L. & T. DEWELLER	19	3/24/84	1043 1082	G. & C. ZIEGLER	19	3/24/84	1043 1084				
	J. & D. SMITH	20	0.247 617 728												
	L. G. & L. E. EIERMANN	21	0.247 593 909												
	R. R. HATCH	22	0.247 723 299	E. H. SEBORG	24	6/20	1023 631								
	E. & M. COX	23	0.247 855 519												
	M. A. & A. CONTINENZA	26	0.247 821 666	M. A. CONTINENZA	26	2/27	996 1022								
	J. L. & P. V. MILLER	27	0.247 527 671												
	R. G. WATSON	28	0.247 959 837												
	N. & V. L. SHUMINSKI	30	0.247 743 614												
	R. J. WEIRICK	31	0.247 813 1031												
	T. & V. McEANEY	32	0.247 557 201	V. McEANEY			974 499								
	W. & K. BLUE	33	0.247 591 1090												
	R. & D. KLEBER	34	0.247 553 722												
	K. & E. FERRY	35	0.247 551 256												
	B. MAZZONE	36	0.247 551 181												
	D. M. MARES	37	0.247 775 1109												
	A. & S. PETRICK	38	0.247 661 337												
	W. E. & D. M. CARTERBURY	40	0.247 552 913	P. R. J. M. FREEDBERG	50	6/30	1021 8								
	J. BRUCE	41	0.247 663 711												
	T. & P. AKERS	42	0.247 839 457												
	C. N. BRIGHAM	43	0.247 551 574												
	ALLEGHENY WESTERN METHOD.	44	0.247 647 541												
	M. & D. ROACH	45	0.247 856 447												
	J. W. & K. M. BLASIUS	46	0.247 551 540												
	R. & A. R. A. BRAUN	47	0.247 556 1077												
	J. R. HOSTETLER	48	0.247 937 625												
	W. J. SLY	49	0.247 766 771												

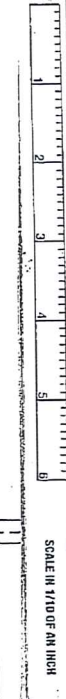
TRAV-REDI
1-800-345-7334



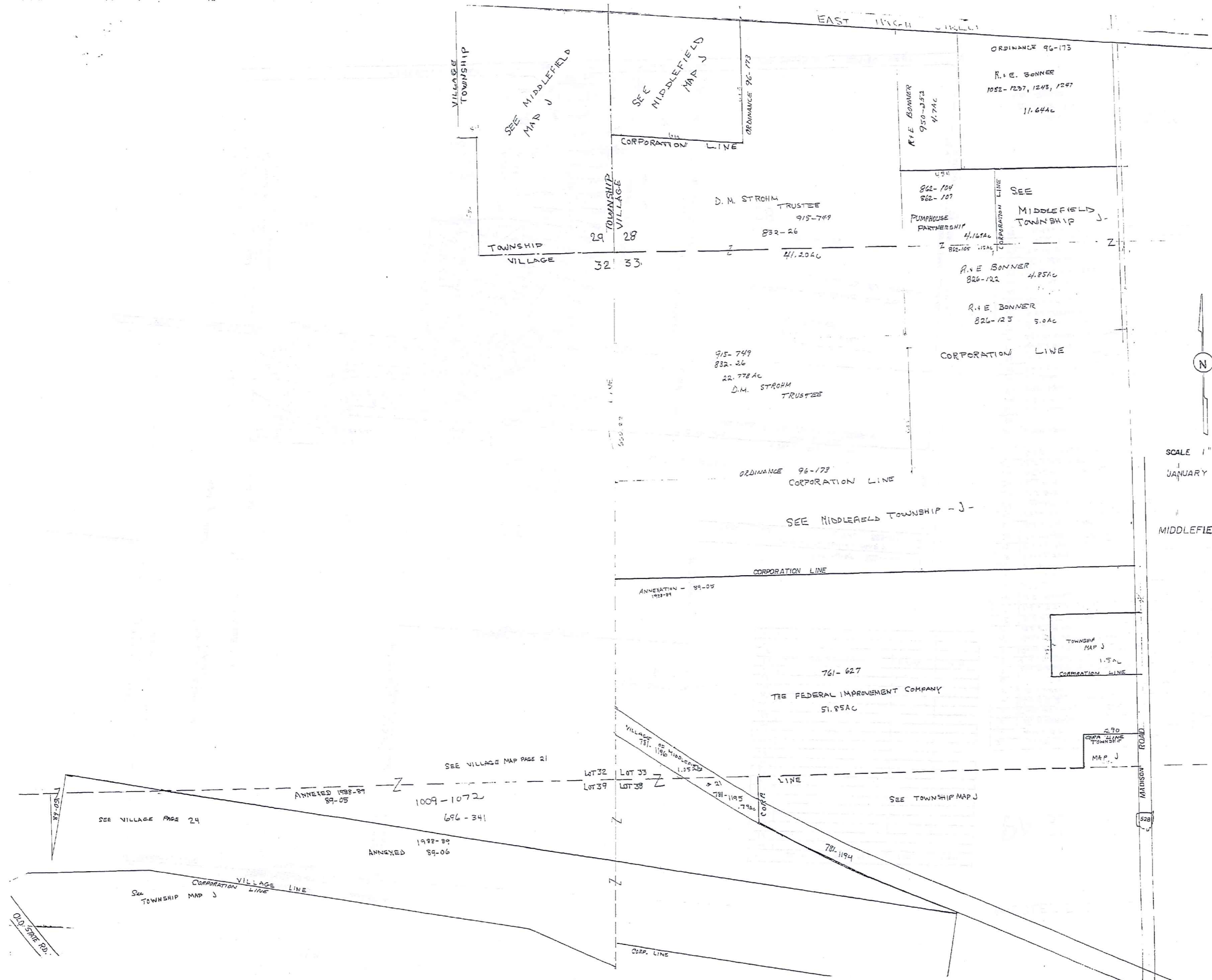
SEE PAGE 24A



TRW-HEM
1-800-345-7334



332



SCALE 1" = 200'
 JANUARY 1, 1997

MIDDLEFIELD VILLAGE PAGE 24-A

TRIM-REDI
 1-800-345-7334

SCALE IN 1/10 OF AN INCH



S/L	GLEN VALLEY FARMS #2	DATE	VOLUME
48			
47			
46			
45			
44			
43			
42			
41			
40			
39			
38			
37			
36			
35			
34			
33			
32			
31			
30			
29			
28			
27			
26			
25			
24			
23			
22			
21			
20			
19			
18			
17			
16			
15			
14			
13			
12			
11			
10			
9			
8			
7			
6			
5			
4			
3			
2			
1			

MIDDLEFIELD VILLAGE

PAGE 25

S/L	GLEN VALLEY FARMS #2	DATE	VOLUME
1	W.W. & B.M. HILL	9-10-93	953-532
2	R. HARRISON	8-18-90	1070-302
3	COUNTRY VALLEY ESTATES, L.L.C.	7-15-94	965-395
4	W.H. & E.A. DUNLAP	3-24-95	1011-240
5	J. LINNAN	12-9-94	1002-1179
6	J.J. LAZZARA	9-10-96	1068-971
7	M.L. PATTERSON, SR. & Y.M. PATTERSON	1-4-94	968-149
8	R.H. LEE WOODZ	5-18-95	1015-712
9	COUNTRY VALLEY ESTATES, LTD.	9-30-94	995-1009
10	COUNTRY VALLEY ESTATES, LTD.	2-1-95	1007-128
11	M.B. & M.M. HANISH	12-30-93	967-1170
12	B.J. & G.T. WALLACE	12-30-93	967-1073
13	D.S. & B.T. MIHALIK	12-29-93	967-317
14	M.C. PATRAS	6-21-96	1055-1206
15	ART JIM ROSE	8-1-94	989-858
16	M.M. MUEHL & D.M. LYNE	9-29-93	954-1115
17	R.A. & R.M. GEITHER	1-12-94	968-1315
18	D.V.E. THRO	8-19-96	1065-219
19	E.L. & P. MARCHINI	9-27-93	954-1325
20	T.R. MILLER & A.K. BUEHNER	1-20-96	1041-353
21	R.R. & C.A. WOLFERT	8-31-94	992-929
22	COUNTRY VALLEY ESTATES, LTD.	2-1-95	1007-124
23	COUNTRY VALLEY ESTATES, LTD.	2-1-95	1007-126
24	V.J. GIBALDI	12-8-94	1002-912
25	E.E. & K. KUBIK	3-27-95	1010-1098
26	A.T. & J. WEAVERHOLT	12-10-93	964-1135
27	S.J. & M.E. SARGENT	8-22-94	991-1021
GLEN VALLEY FARMS #2 VOL 21 - R 1162 117			
28			
29	DANON HOMES INC.	9-28-94	1070-428
30			
31	E.W. NOVAK	5-24-96	1052-1165
32	S.C. & A.E. DAY	9-13-96	1069-577
33	DANON HOMES INC.	11/11/96	1074-453
34	W.J. BADELL & D.S. MONTGOMERY	6-12-96	1055-55
35	S.M. & C.S. STEFANIK	5-25-95	1016-424
36	C.C. & H.L. MULLETT	8-25-95	1025-782
37	W.R. & L. MENVED	9-3-96	1067-882
38	S.E.Y. T. LEVENS, DBA FOPLAR RIDGE BLDG	4-16-96	1047-1215
39	S.E. & L.A. KLEIN	10-31-95	1032-783
40	S. & C.L. TEMPLETON	1-31-97	1090-200
41	W.J. & V.I. CORNELL	3-1-96	1042-1063
42			
43	F.W. KLARICH	7-11-95	1020-1136
44	J.L. KISH & K.A. COWHER	6-21-96	1056-170
45	R.C. & W.A. LUPATK	7-22-96	1000-401
46	J.A. & B. COSTA	8-2-96	1062-764
47	J.B. BRAUN	6-9-95	1017-616
48	P.M. & J.M. WALTERS	6-14-96	1055-447

TRAV-REDI
 1-800-345-7334
 SCALE IN 1/16" OR 1/8" HIGH

334

PAGE 25

129.0826 AC
 ORDINANCE 91-150
 MID. ANNEXED 12-24-91

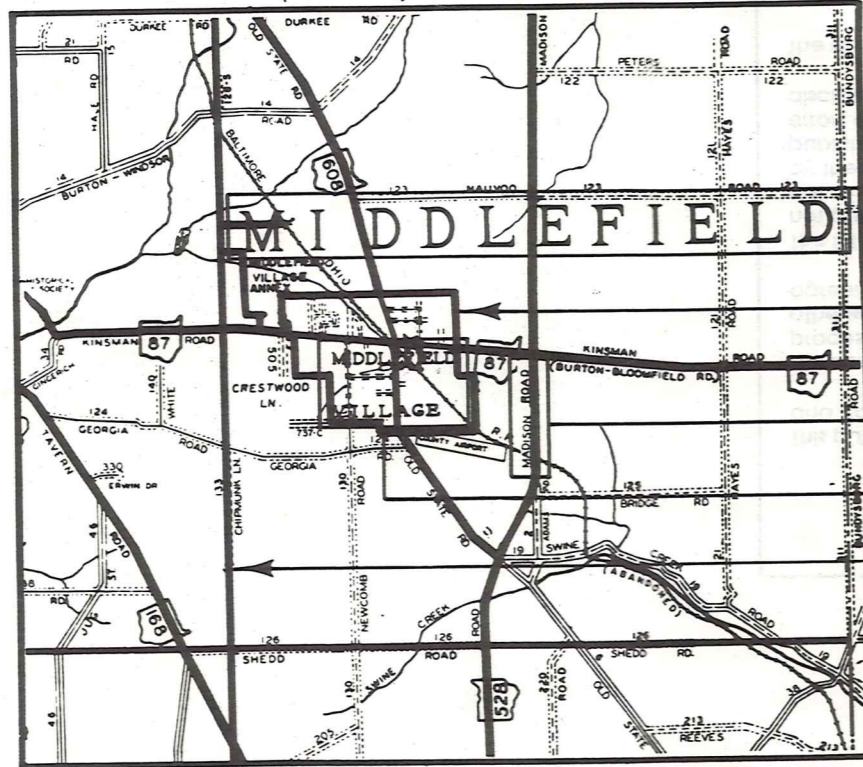
✓ indicates survey file with map depts

SCALE 1" = 200'
 JAN. 1, 1997

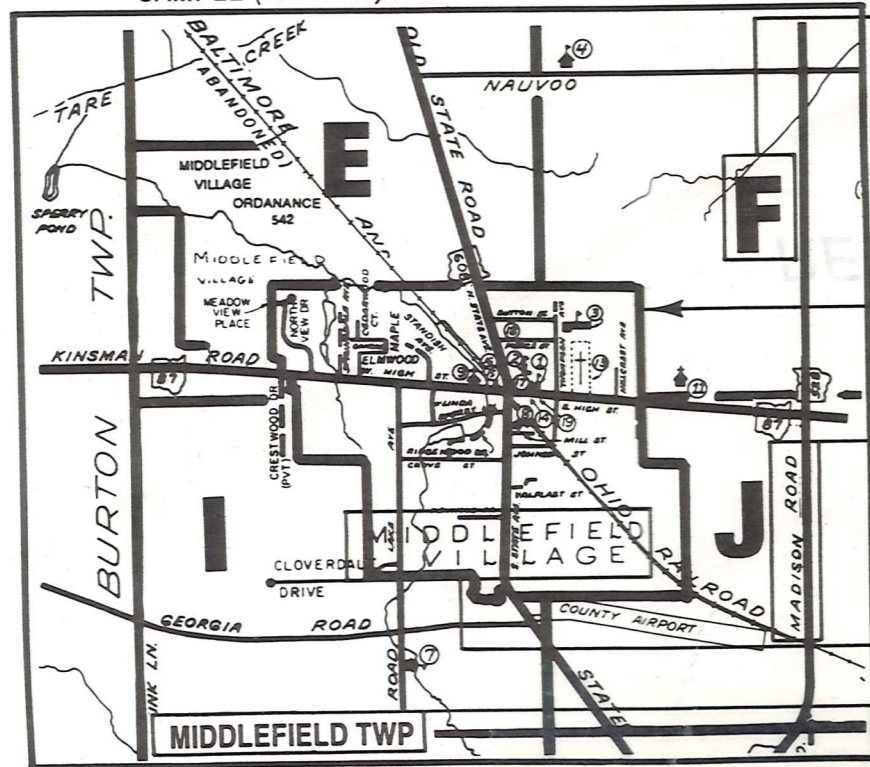
Explanation and Use Sheet for Geauga County, Ohio

A

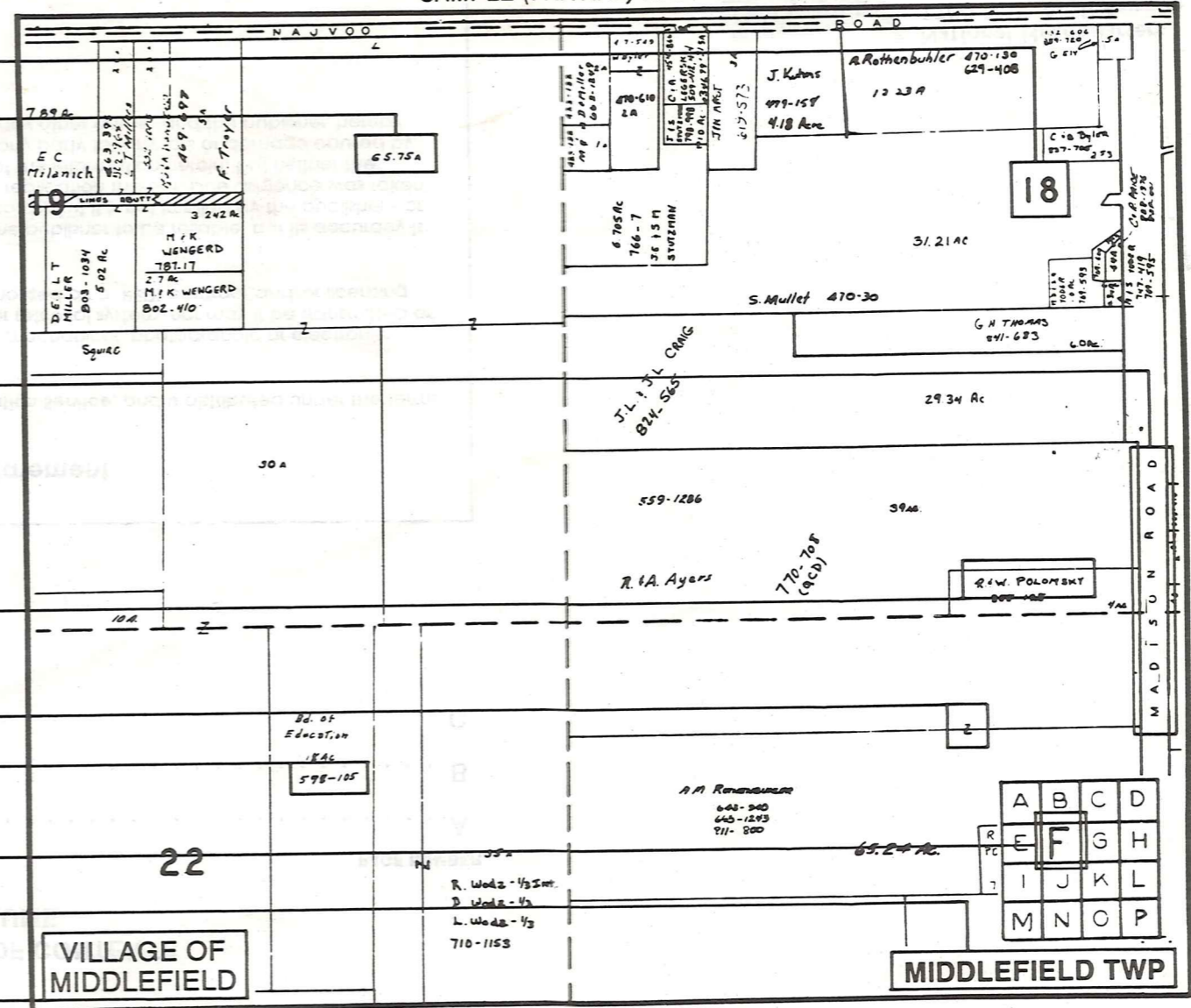
SAMPLE (PARTIAL) COUNTY INDEX MAP



SAMPLE (PARTIAL) MUNICIPALITY INDEX MAP



SAMPLE (PARTIAL) MAP PAGE



- Tract Lot Number
- Acreage
- Township Name
- Village Boundary
- Street Name
- Village Name
- Township Boundary
- Owners Name
- Denotes Continuous Ownership
- Deed Book & Page
- Map Page Number
- Township Name
- Village Name

- Village Boundary
- Street Name
- Village Name
- Township Name

USE OF THE MAP VOLUME

1. LOCATE THE GENERAL AREA OF INTEREST ON THE COUNTY INDEX MAP AND NOTE THE MUNICIPALITY NAME (TOWNSHIP OR VILLAGE).
 2. REFER TO THE TABLE OF CONTENTS AND NOTE THE BEGINNING ATLAS PAGE NUMBER FOR THE MUNICIPALITY OF INTEREST.
 3. TURN TO THE PAGE INDICATED, ON THIS PAGE WILL APPEAR AN INDEX MAP FOR THAT MUNICIPALITY.
 4. LOCATE THE GENERAL AREA OF INTEREST AND NOTE THE MAP PAGE NUMBER. THIS MAY BE EITHER A LETTER OR A NUMBER.
 5. MAP PAGES ARE IN ALPHABETICAL (OR NUMERICAL) SEQUENCE FOLLOWING THE MUNICIPALITY INDEX MAP. FOLLOW SEQUENCE TO THE MAP PAGE INDICATED.
 6. LOCATE SPECIFIC PARCEL OF INTEREST AND NOTE THE DESIRED INFORMATION.
- NOTE: ON SOME MAPS YOU MAY BE REFERRED TO A DETAIL SHEET SHOWING AN ENLARGEMENT OF THE AREA. THESE MAPS ARE FOUND AT THE END OF THE REGULAR MAP PAGES IN EACH MUNICIPALITY IN EITHER ALPHABETICAL OR NUMERICAL SEQUENCE.
- NOTE: CHARDON VILLAGE HAS TITLE SHEETS. TO LOCATE OWNERS NAME, NOTE THE PARCEL NUMBER, REFER TO THE TITLE PAGE FOLLOWING THE MAP OF INTEREST, FOLLOW NUMERICAL SEQUENCE TO THE PARCEL NUMBER OF INTEREST AND NOTE THE DESIRED INFORMATION. IN ALL OTHER MUNICIPALITIES THE OWNERS NAME APPEARS ON THE MAP PAGE.